

# WET<sup>®</sup>

WASHING EQUIPMENT OF TEXAS

**BYPASS  
COOLING**



# JUPITER II

The **Jupiter II** is the most powerful of WET's premier line of stationary pressure washers. Reliability, performance, and endurance normally come at a price, but this brute has a unique design feature not found anywhere else.

**Bypass Cooling** prohibits the pump from overheating when the trigger is not pulled. Other pressure washers recirculate the bypass water through the pump again and again. Each time through the pump the water temperature increases dramatically until it reaches the critical temperature of 145°F in less than a minute.

The **Jupiter II's** bypass water will not reach 145°F for almost two hours! This advancement alone will greatly reduce downtime and cost of ownership. Pump life and endurance are increased tenfold!

**Bypass Cooling** with lots of Stainless Steel, the best safety controls, a rugged 1-¼" square tubing frame, and industrial components make the **Jupiter II** inexpensive to own and a pleasure to use.

*The Jupiter II ..... is high on quality*

*The Jupiter II ..... is feature rich*

*The Jupiter II..... is ready for tough duty*

### **Specifications:**

- + 5-gpm @ 3000-psi
- + 10-hp Baldor motor, 230-v, 3-ph, 30 amps
- + ETL Safety Certified to UL std
- + General pump
- + Belt-driven
- + **Bypass Cooling**
- + SS panels & coil wrap
- + SS float tank
- + GFCI
- + 50' hi-pressure hose
- + SS Variable pressure wand & trigger gun
- + Magnetic motor starter
- + Time-delay shutdown
- + Electronic ignition
- + Draft diverter
- + 440,000 BTUs, natural gas
- + 56"L x 24"W x 55"H
- + 848 lbs

### **Washing Equipment of Texas**

*Five locations to serve you!*

*San Antonio, TX*

*The Rio Grande Valley & Laredo, TX*

*Corpus Christi, TX*

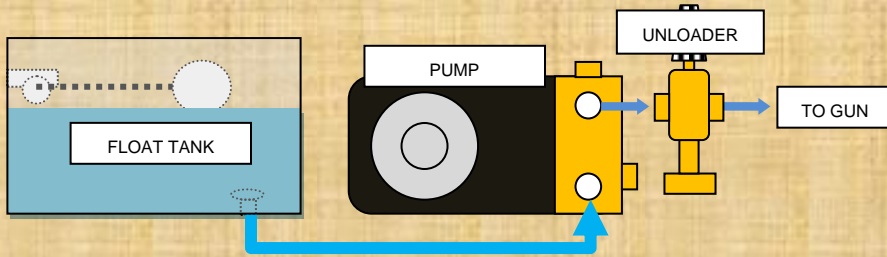
*El Paso, TX*

*Albuquerque, NM*

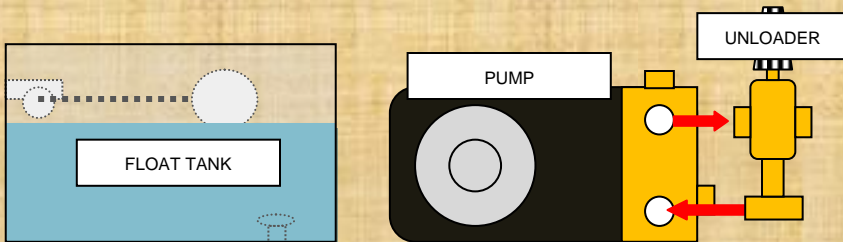
**(800)899-9388**

# WET<sup>®</sup>

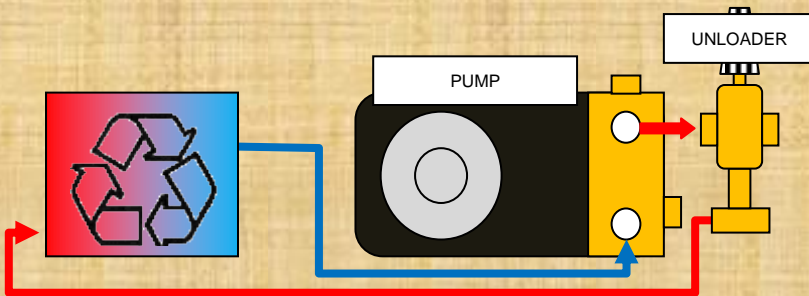
WASHING EQUIPMENT OF TEXAS



FLOW THROUGH ALL PRESSURE WASHERS WHEN TRIGGER IS PULLED



FLOW THROUGH OTHER PRESSURE WASHERS WHEN TRIGGER IS NOT PULLED



FLOW THROUGH A WET PRESSURE WASHER WHEN TRIGGER IS NOT PULLED

THE TRAPPED WATER IS COOLED BEFORE RETURNING TO THE PUMP

WET offers a wide variety of industrial cleaning compounds:

- ✚ Degreasers
- ✚ Vehicle wash
- ✚ Floor cleaning detergents
- ✚ Automatic parts washer detergents
- ✚ Aluminum brighteners
- ✚ Defoamers
- ✚ Detergents especially formulated for wash water recycling systems

WET offers preventive maintenance programs for high volume detergent customers saving delivery fees, reduced labor charges, and even parts discounts in return for their business

WET offers detergents in bulk volume where we provide the 300-gallon storage tank:

- ✚ No (55) gallon drums
- ✚ Bulk volume pricing
- ✚ Industrial strength concentrates

WET supplies their customers using the bulk detergent program with a free loaner pressure washer when their machine is down.

We value our customers, and we hope it shows!

[www.wet-inc.com](http://www.wet-inc.com)

Corporate address  
PO Box 200066  
San Antonio, TX 78220

2813 N Expressway 83 Ste C  
La Feria, TX 78559

1737 N Lexington Blvd  
Corpus Christi, TX 78408

7198 Merchant C-1  
El Paso, TX 77915

2115 Menaul NE  
Albuquerque, NM 87107

MADE IN  
THE USA 

*You can't get clean if you don't get **WET!***